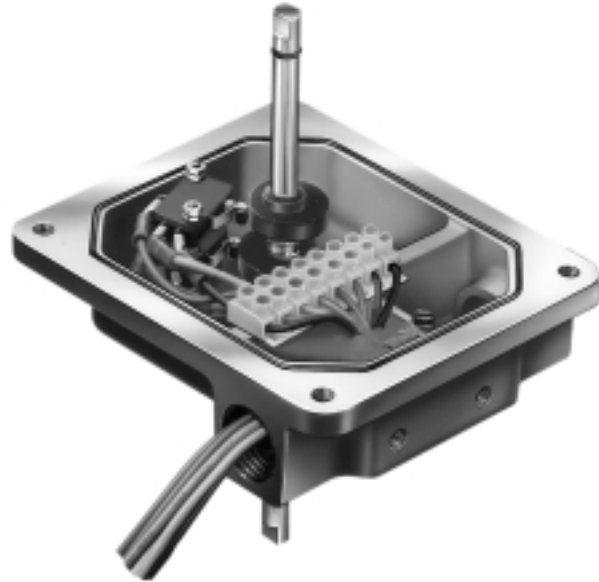


UltraSwitch™ Potted Leads

Introduction:

UltraSwitch™ XL, PL and PC Series position indicators may be provided with factory-potted leads. This option allows installation without the external potting fittings generally required in hazardous locations (XL Series only). Factory-potted leads may also be used to seal against condensation which may collect in conduit.



Specifications:

UltraSwitch™ potted leads feature user-specified lengths of wire inserted into the conduit entry and pre-wired to the terminal strip. We provide one lead for each limit switch termination and two for solenoid valve wiring. The leads are then “threaded” through a neoprene dam inserted into the conduit entry bottom. UltraSwitch™ XL, PL and PC housings all feature an internal potting well which is finally filled with potting compound. This system substitutes for more expensive external sealing fittings generally required within 18 inches of the position indicator housing (XL Series only).

How to Order:

Referring to the table of contents page, simply specify the letter “P” as indicated. Also specify the following:

1. Which conduit entry – left or right looking down into the potting wells with the wells closest to you.
2. Length of leads required in inches. If not specified, Automax will provide 48”.
3. Color of wire for each lead. If not specified, Automax will provide the same colors as those used to wire the switches to the terminal strip.
4. Which switch terminations to wire (example: “normally open only”). If not specified, Automax will wire all switch terminations plus two leads for solenoid wiring.