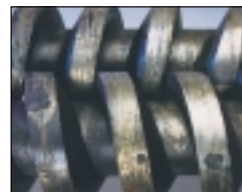


Our Total Commitment to Customer Service

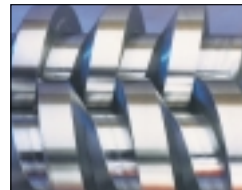


FlowsERVE support services are focused on you.

Our parts supply and manufacturing facilities, located throughout the world, are geared to provide high quality OEM parts. Computerized quotation and order fulfillment programs provide timely pricing and order entry.



Before refurbishing



After refurbishing

In addition to providing quality OEM parts, FlowsERVE offers expert repairs (both at our pump service facilities and on-site), cost-effective upgrades and extensive aftermarket services that include:

- Complete design analyses of critical pumping systems
- Detailed pump condition assessment and quality repair

- Pump monitoring and predictive maintenance systems
- Complete parts inventory management programs
- Single point project management for expeditious handling of hardware purchases, repairs, upgrades, and technical support

All of these services and more are aimed at optimizing your pump and system performance.



DISCLAIMER: Nothing contained in this brochure is intended to extend any warranty or representation, expressed or implied, regarding the products described herein. Any such warranties or other terms and conditions of sales of products shall be in accordance with FlowsERVE standard Terms and Conditions of Sale for such products, which are available on request.

USA and Canada

FlowsERVE Corporation
Pump Division
Millennium Center
222 Las Colinas Blvd., 15th Floor
Irving, Texas 75039-5421 USA
Telephone: 1 972 443 6500
Telefax: 1 972 443 6800

Europe, Middle East, Africa

Worthington S.P.A.
FlowsERVE Corporation
Via Rossini 90/92
20033 Desio (Milan), Italy
Telephone: 39 0362 6121
Telefax: 39 0362 303396



Pump Division

Your local FlowsERVE representative:

To find your local FlowsERVE representative
please use the Sales Support Locator System
found at www.flowsERVE.com

Or call toll free: 1 800 728 PUMP

Latin America and Caribbean

FlowsERVE Corporation
Pump Division
6840 Wynnwood Lane
Houston, Texas 77008 USA
Telephone: 1 713 803 4434
Telefax: 1 713 803 4497

Asia Pacific

FlowsERVE Pte. Ltd.
Pump Division
200 Pandan Loop #06-03/04
Pantech 21
Singapore 128388
Telephone: 65 6775 3003
Telefax: 65 6779 4607

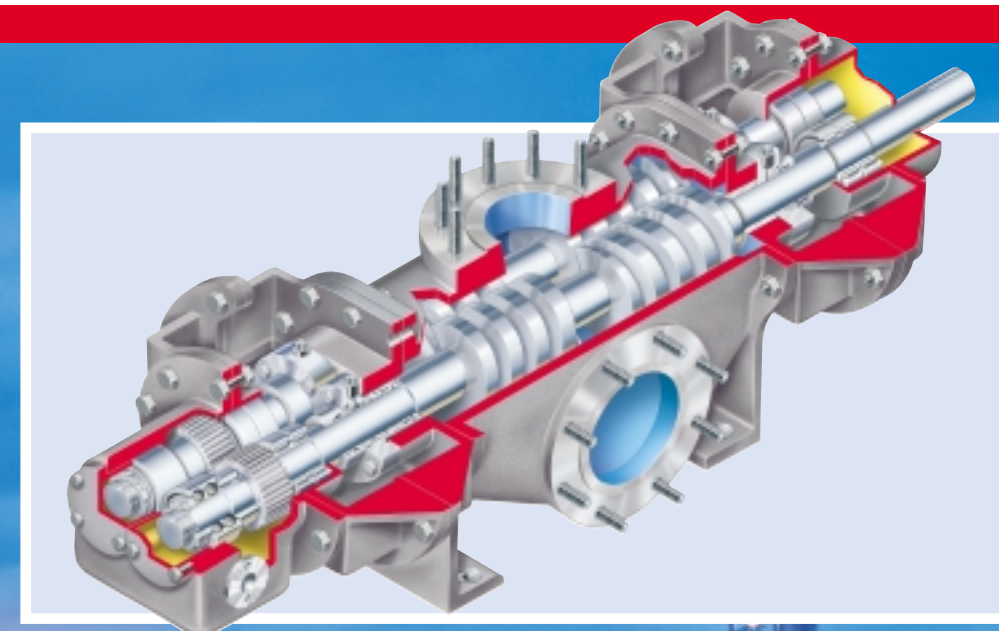
BTF6100F
Printed in U.S.A.
April 2003
© FlowsERVE Corporation



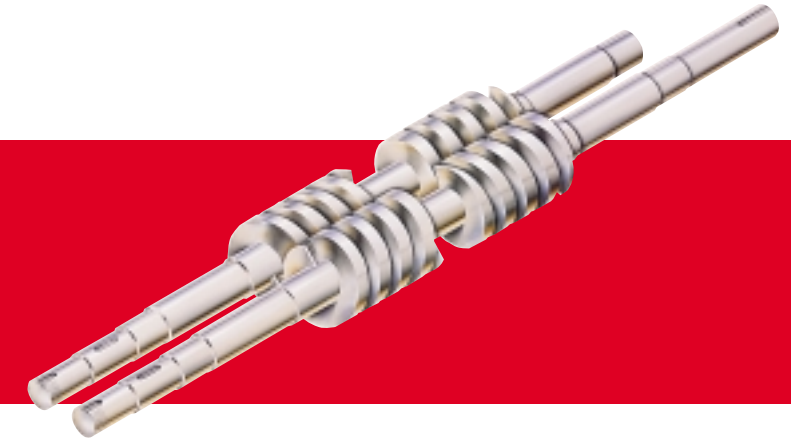
Pump Division

Two-Screw Upgrades and Reconditioning

For Two-Screw Pumps in Demanding Services



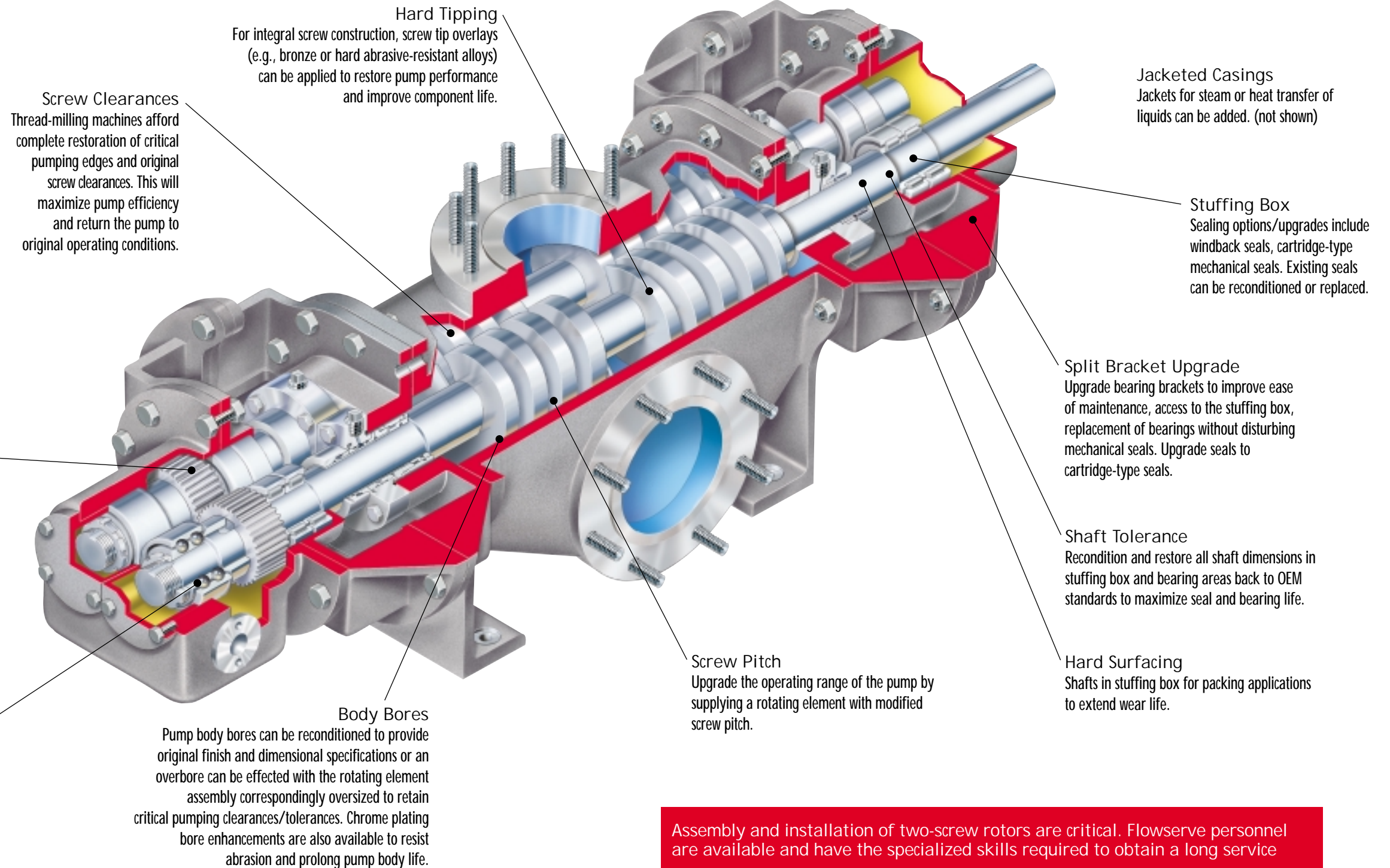
Pre-engineered upgrades promote longer pump life



Flowserve engineers have developed upgrades for demanding applications such as fuel, lube and crude oil transfer and feed services, navy and marine cargo handling, slurry pumping, and a variety of high-viscosity services.

Flowserve engineers are available to review your existing pump design and maintenance history. Upgrade recommendations will be based on feasibility and cost effectiveness.

Flowserve pump service facilities have the capabilities of upgrading and reconditioning our own products plus those of other manufacturers.



Assembly and installation of two-screw rotors are critical. Flowserve personnel are available and have the specialized skills required to obtain a long service