



Scienco® Products

PH6-DEF

Reliable Pumping Systems for Diesel Exhaust Fluid Applications



Excellence in Fluid Transfer

Extensively engineered and designed to meet the difficult demands of DEF transfer, the PH6 offers you a reliable and affordable solution. Compliant to ISO 22241 and with wide-ranging product testing, the PH6 is the best-in-class pumping system product.

Operating Parameters

- Flows to 2.3 m³/h (10 gpm)
- Pressures to 1.7 bar (25 psi)
- Temperatures to 43°C (110°F)
- Suction lift greater than 1.8 m (6 ft)

Features and Benefits

Self-priming Unit provides start-up from a completely dry system, while also enabling complete tank evacuation.

UL-recognized thermally protected motor assembly is an independent verification of product safety.

Multiple System Configurations, including horizontal and vertical mounting, allow for a system that meets your varying needs.

DEF-compatible polypropylene, Santoprene® and peroxide-cured EPDM to prevent fluid contamination

Integrated Micro Matic® Coupler (optional) eliminates a hose and associated fittings, while giving the user a quick disconnect and re-connect of the pump.

Unique Designs such as our “Auto Shut-Off” unit provide the end user an option that can greatly extend the life expectancy of the system.

Multi-chamber Pump Cartridge increases reliability and is quickly removable for easy maintenance and field replacement.

Electronic Flow Meters and Ancillaries are available to complete your DEF pumping system; hand pump product is available for smaller applications.

Two-year Warranty gives assurance of Flowserve design and workmanship.

© Santoprene is a registered trademark of ExxonMobil.

Experience In Motion

Extensive Re-Engineering

The recently re-engineered PH6-DEF product has undergone extensive testing to ensure you receive a product that can meet the demands of the SCR/DEF marketplace.

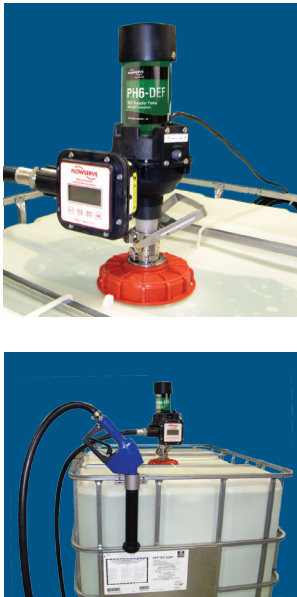
Testing Highlights

- More than 1.6 million gallons of DEF have been pumped under various operating conditions without failure.
- 23 endurance tests (> 60 000 gallons) were concluded with 100% success rate and zero failures.
- Several units were run under continuous duty for 130 000 gallons without any issues.

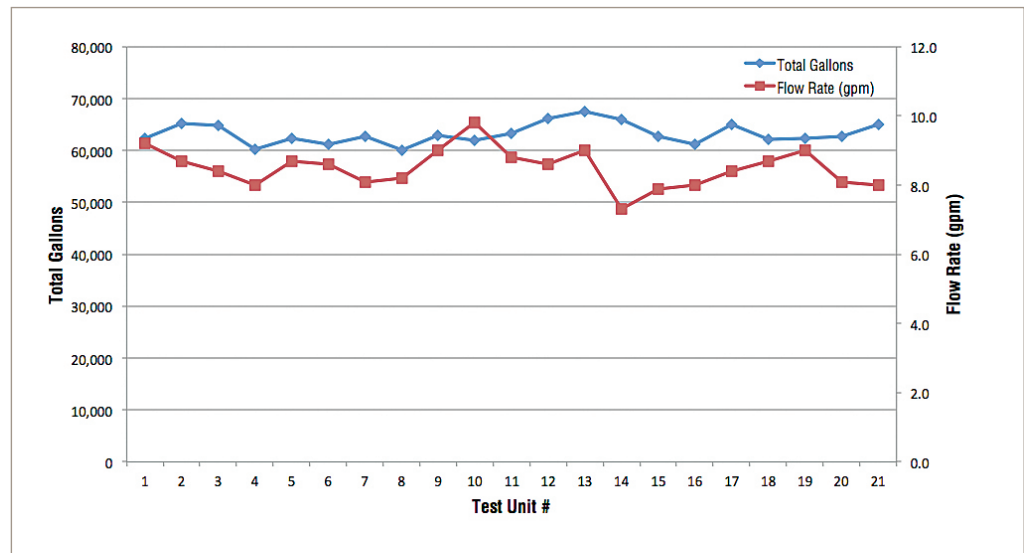
- Test types included: continuous endurance run; various duty cycles; deadhead; elevated temperature; hydraulic leak test; and tank evacuation.
- Various PH6-DEF configurations were tested with the Micro Matic inlet valve and a 12 ft long, 3/4 in diameter discharge hose with flow meter and auto shut-off nozzle.
- At tests' conclusion, all units were disassembled and examined to ensure components maintained quality and integrity.

Testing Summary

After 18 months of engineering and evaluation, the PH6-DEF product has proven to be an excellent selection for DEF transfer systems.



Endurance Testing



Flowserve is the recognized world leader in supplying pumps to the oil, gas, chemical, power and general industries. With more than 15 000 employees in more than 56 countries, we combine our global reach with a local presence. The Flowserve self-priming PH6 diaphragm pump is ideal for the transfer of Diesel Exhaust Fluid (DEF). The standard for many bulk systems, the PH6 pump is chemically resistant, easily portable and highly reliable. Contact Flowserve for your DEF application needs.

Bulletin PSS-90-19.1 (E) September 2012.
 © 2012 Flowserve Corporation

To find your local Flowserve representative:

Ryan Ollinger, Sales Manager, 757-485-8124

General inquiries call +1 800 343 PUMP (7867)
 or email csb@flowserve.com

Flowserve Corporation
 3732 Cook Blvd., Suite 101
 Chesapeake, VA 23323