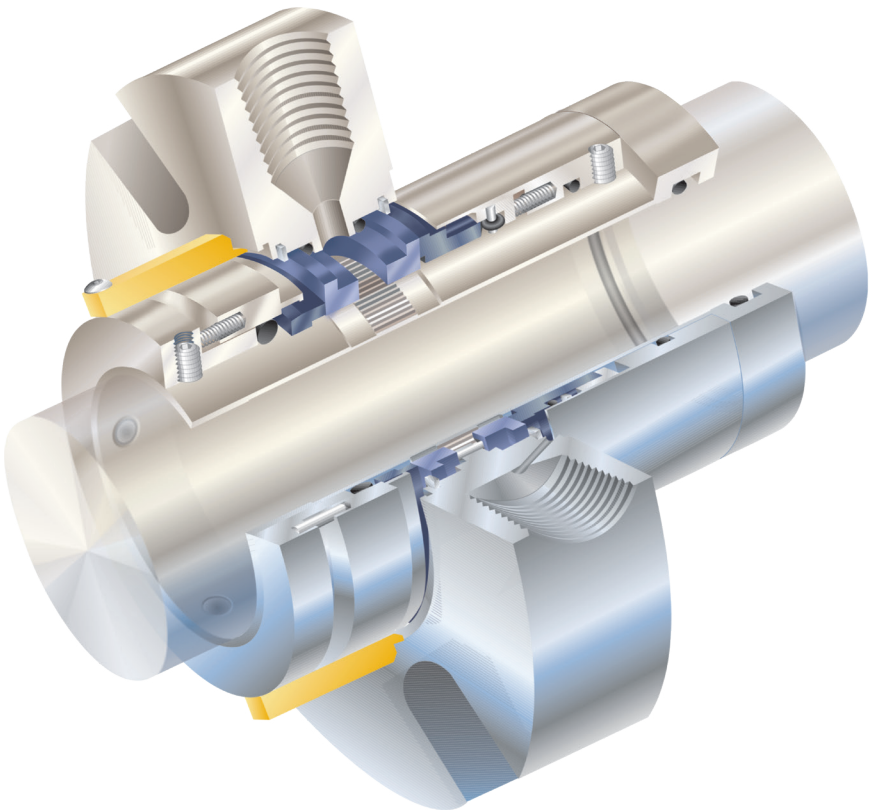




Installation Instructions

Durametallic® P-200

Cartridge dual pusher seal for
standard and big bore ANSI pumps



Description

This P-200 seal is a dual, cartridge mounted, end face mechanical seal, designed for ease of installation. **No seal setting dimensions are required.** Removable setting devices provide proper alignment. Installation according to the following steps will ensure a long trouble-free life of the P-200 seal.

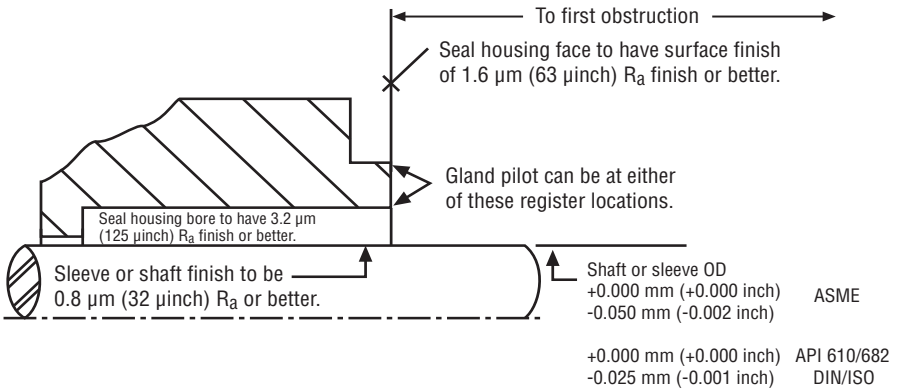
1 Equipment Check

1.1 Follow plant safety regulations prior to equipment disassembly:

- Lock out motor and valves.
- Wear designated personal safety equipment.
- Relieve any pressure in the system.
- Consult plant MSDS files for hazardous material regulations.

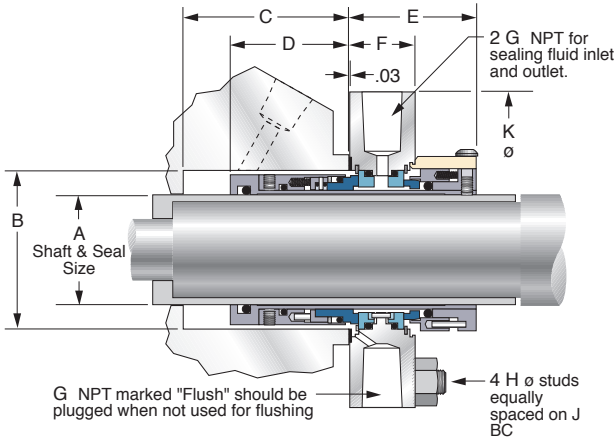
Seal Chamber Requirements

Figure 1



P-200 Dimensional Data

Figure 2



Dimensional Data for P-200 Seal (inches)

A	B	B	C	D	E	F	G	H	J	K
Shaft & Seal Size	Box Bore (Min)	Box Bore (Max)	Box Depth (Min)	Seal Depth	Seal Extension	Gland Thickness	NPT	Bolt Dia. (Max)	Bolt Circle (Max)	Gland OD (Min)
1.000	1.750	1.875	1.78	1.69	2.00	1.02	0.375	0.375	2.75	3.75
1.125	1.750	2.000	1.78	1.69	2.00	1.02	0.375	0.500	3.00	3.88
1.250	2.000	2.125	1.97	1.88	2.00	1.02	0.375	0.500	3.12	4.25
1.375	2.000	2.250	1.97	1.88	2.00	1.02	0.375	0.375	3.25	4.25
1.500	2.250	2.500	1.97	1.88	2.00	1.02	0.375	0.375	3.75	4.75
1.625	2.375	2.625	1.97	1.88	2.00	1.02	0.375	0.500	3.75	4.75
1.750	2.500	2.750	1.97	1.88	2.00	1.02	0.375	0.500	3.75	5.00
1.875	2.625	2.875	1.97	1.88	2.00	1.02	0.375	0.500	3.88	5.00
2.000	2.750	3.000	1.97	1.88	2.00	1.02	0.375	0.625	4.12	5.12
2.125	2.875	3.250	1.97	1.88	2.00	1.02	0.375	0.625	4.38	6.00
2.250	3.000	3.375	1.97	1.88	2.00	1.02	0.375	0.625	4.62	6.50
2.375	3.250	3.625	2.16	2.06	2.09	1.11	0.375	0.625	5.00	6.38
2.500	3.375	3.750	2.16	2.06	2.09	1.11	0.375	0.625	5.00	6.62
2.625	3.500	3.875	2.16	2.06	2.09	1.11	0.375	0.750	5.75	7.25
2.750	3.750	4.062	2.16	2.06	2.62	1.58	0.500			
2.875	3.875	4.187	2.16	2.06	2.62	1.58	0.500			
3.000	4.000	4.312	2.16	2.06	2.62	1.58	0.500			
3.125	4.250	4.562	2.16	2.06	2.62	1.58	0.500			
3.250	4.375	4.687	2.28	2.19	2.75	1.71	0.500			
3.375	4.500	4.812	2.28	2.19	2.75	1.71	0.500			
3.500	4.625	4.937	2.28	2.19	2.75	1.71	0.500			
3.625	4.750	5.062	2.28	2.19	2.75	1.71	0.500			
3.750	4.875	5.187	2.28	2.19	2.75	1.71	0.500			
3.875	5.000	5.312	2.28	2.19	2.75	1.71	0.500			

The bolt diameter, bolt circle and gland OD for shaft and seal sizes 2.750 inches through 3.875 inches will be determined by equipment requirements.

* This seal size uses the N-CBR inner seal rotary unit.

† Preferred design for these shaft sizes. Use whenever possible.

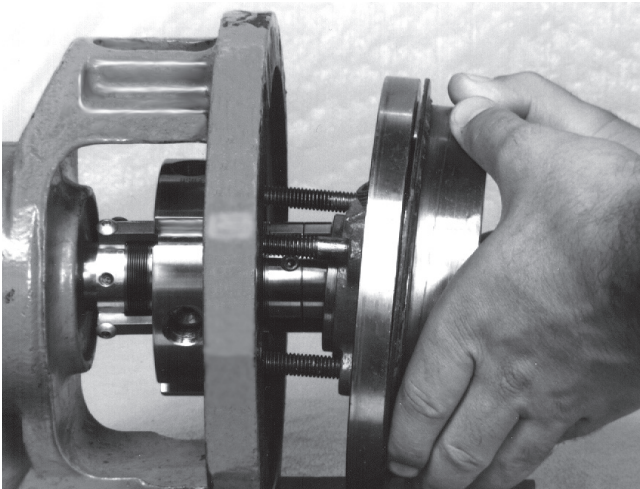
- 1.2 **Disassemble equipment** in accordance with equipment manufacturer's instructions to allow access to seal installation area.
- 1.3 **Remove existing mechanical seal and gland** or compression packing and packing gland (follower flange).
- 1.4 Make sure the **shaft or sleeve** is free of burrs, cuts, dents or corrosion that might cause leakage past the sleeve gasket, as shown on the assembly drawing. Replace worn shaft or sleeve. **Remove sharp edges** from keyways and threads.
- 1.5 Make sure the **seal housing face is clean** and free of burrs, cuts, dents or corrosion that might cause leakage at the gland gasket or misalign the seal gland.
- 1.6 **Check equipment dimensions** to ensure they are within the dimensions shown in **Figures 1 and 2**. Critical dimensions include shaft or sleeve OD (A), chamber depth (C), minimum and maximum seal housing bore (B), and the minimum distance to the first obstruction (E) plus 3.175 mm (0.125 inch).
- 1.7 **Check gland bolting** to ensure that bolt diameter (H) and bolt circle (J) conform to the dimensions shown in Figure 2.
- 1.8 **Handle the P-200 seal with care**, it is manufactured to precise tolerances. The sealing faces of the rotating face and stationary face are of special importance. They are lapped flat to within three light bands (34.8 millionths of an inch). **Keep the seal faces perfectly clean at all times.**

2 P-200 Seal Installation

Tools needed:

- **Open-end wrench** for gland nuts
- **Allen wrenches** provided
- **Silicone lubricant** provided

- 2.1 **Lubricate the shaft** or sleeve OD lightly with the silicone lubricant provided and **slide the complete P-200 cartridge seal onto the shaft**, with the end with the setting devices toward the bearing housing.
- 2.2 **Install pump back plate** (seal chamber/stuffing box), Figure 3. **Position the P-200 seal gland flush connection, port a** in Figure 4, **in the 3 o'clock position** for normal installations with CW rotation (9 o'clock for CCW rotation) for optimum heat removal. Alternate positioning of the gland may be necessary with some pump designs to permit seal piping to clear the bearing housing. Refer to the assembly drawing that is supplied with the seal for proper positioning. **Bolt the back plate in place** on the bearing housing.



Install pump backplate

Figure 3

- 2.3 **Position the P-200 cartridge gland** with the gland gasket in place against the pump back plate (seal chamber/stuffing box) face, install flat washers on the studs to prevent misalignment, and **tighten the gland nuts** evenly, cross-staggering the adjustment of the nuts. Do not over tighten.
- 2.4 **Assemble the pump, adjust the bearings, set the impeller and connect the coupling** so that the shaft is in its operating axial position. Any subsequent axial adjustment of the shaft requires resetting of the seal. Connect pump piping, (see Section 3) allowing no pipe strain on the pump casing.
- 2.5 **Tighten the set screws** on the P-200 cartridge collar with the Allen wrench provided.
- 2.6 **Remove setting devices** by removing the cap screws with the Allen wrench provided. Save the setting devices for use if pump impeller must be reset or if the P-200 is removed for maintenance.
- 2.7 **Turn the shaft** by hand to ensure free operation.
- 2.8 **Pipe up the gland connections** to the P-200 seal as explained in Section 3.
- 2.9 **See Operational Recommendations**, Section 4, before starting pump.

3 Piping

- 3.1 **Install an ANSI 7311 flush for horizontal pumps or ANSI 7313 for vertical pumps.** from the pump discharge to the P-200 seal flush port, **a** Figure 4. To maximize seal life, Flowserve recommends a product bypass flush be used whenever possible with a P-200 seal installed in conventional stuffing box. A bypass flush is not necessary when an enlarged tapered or cylindrical seal chamber is used. If a bypass flush is not used, plug the flush port **a**.

3.2 Taps **b** and **c** in the gland are buffer/ barrier fluid inlet and outlet ports. Which is the inlet port depends on the direction of shaft rotation.

Shaft Rotation from Exposed End of Gland

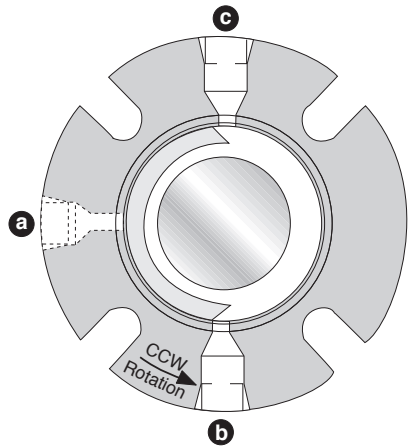
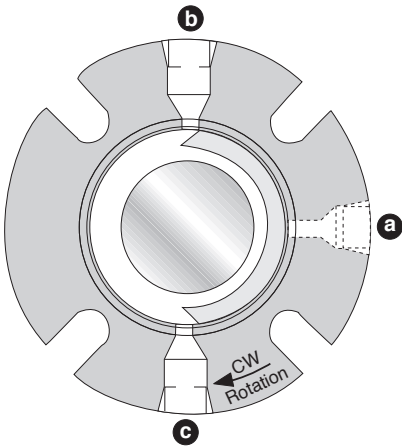
Figure 4

Clockwise Rotation (CW)
(most ANSI pumps)

Inlet Port **c**
Outlet Port **b**

Counterclockwise Rotation (CCW)

Inlet Port **b**
Outlet Port **c**



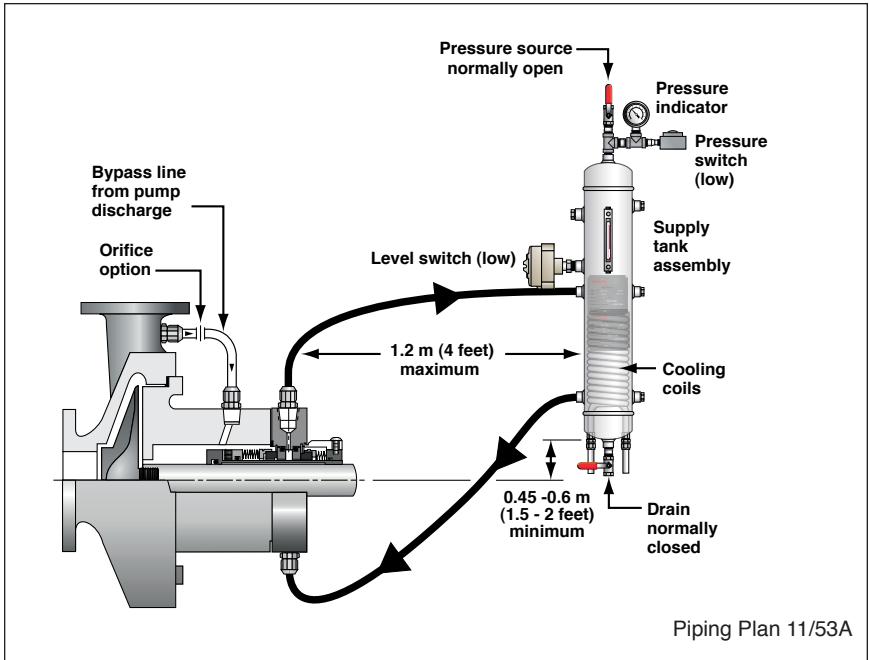
- 3.3 For **dual pressurized seal (double seal)** operation, supply a clean compatible barrier fluid to the inlet port at a pressure at least 170 kPa (25 psi) above the seal chamber pressure. See Figure 5. The pressure of the barrier fluid must not exceed the recommended maximum pressure. Flowserve can supply information on barrier fluid flow requirements based on seal size, product temperature, barrier fluid characteristics, and shaft speed.
- 3.4 For **dual unpressurized (tandem seal)** operation, supply a clean compatible buffer fluid to the inlet port at a pressure below the seal chamber pressure. See Figure 6. The pressure in the seal chamber must not exceed the recommended maximum pressure. Flowserve can supply information on buffer fluid flow requirements based on seal size, product temperature, buffer fluid characteristics, and shaft speed.
- 3.5 The Flowserve supply tank is designed to work with the P-200 seal to form a self-contained sealing system. The circulating feature in the P-200 provides a positive buffer/barrier fluid flow from the seal cavity to the supply tank and back to the seal. In most cases the natural cooling of the piping and tank are adequate to remove seal-generated heat. Cooling coils are available with the supply tank to extend operating limits. The supply tank can be used with the P-200 seal in the dual pressurized, Figure 5, or dual unpressurized, Figure 6, operating modes.

Recommendation: For enhanced seal performance and reduced coking, use **DuraClear** as a barrier fluid. Refer to DuraClear brochure FSD123 or contact a Flowserve seal application engineer for further details.

- 3.6 Good piping practices:
- minimize line losses
 - use large diameter tubing
 - only upward sloping lines
 - use long radius bends
 - minimize component losses
 - optimize for thermosyphon
 - check rotation direction
 - test for leaks

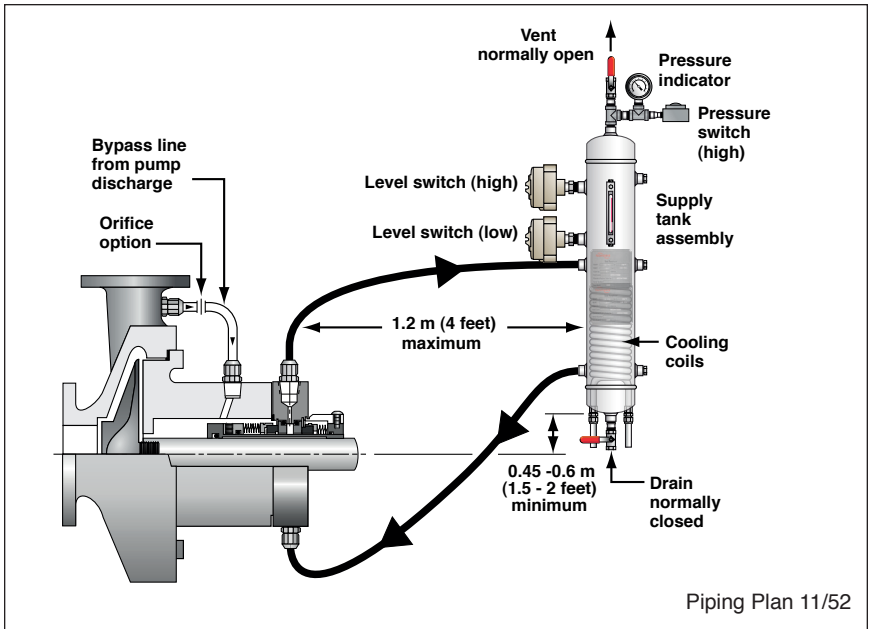
Dual pressurized P-200 with Supply Tank

Figure 5



Dual unpressurized P-200 with Supply Tank

Figure 6



4 Operation

Following these recommendations will ensure maximum MTBPM of the P-200 seal.

- 4.1 **Do not exceed corrosion limits.** The P-200 is designed to resist corrosion by most chemicals. However, do not expose the P-200 materials of construction to products outside of their corrosion limits. The P-200 assembly drawing lists the materials of construction. For chemical resistance ratings, consult Flowserve.
- 4.2 **Do not exceed the pressure-velocity (P-V) limits.**
- 4.3 **Do not exceed the temperature limits** of the P-200. The materials of construction are listed on the assembly drawing. For the temperature limits of materials, consult Flowserve. Turn on any cooling water to the supply tank before start-up.
- 4.4 **Do not start up or run the P-200 dry.** Buffer/barrier fluid must be in the seal cavity at all times during pump operation.

For special problems encountered during installation, contact your nearest Flowserve Sales and Service Representative or Authorized Distributor.

5 Repair

This product is a precision sealing device. The design and dimension tolerances are critical to seal performance. Only parts supplied by Flowserve should be used to repair a seal. To order replacement parts, refer to the part code and B/M number. A spare backup seal should be stocked to reduce repair time.

When seals are returned to Flowserve for repair, **decontaminate the seal assembly** and include an order marked "**Repair or Replace.**"

A signed certificate of decontamination must be attached.

A Material Safety Data Sheet (MSDS) must be enclosed for any product that came in contact with the seal. The seal assembly will be inspected and, if repairable, it will be rebuilt, tested, and returned.



TO REORDER REFER TO
B/M # _____
F.O. _____

FIS111eng 09/2018 Printed in USA

To find your local Flowserve representative
and find out more about Flowserve Corporation,
visit www.flowserve.com

Flowserve Corporation has established industry leadership in the design and manufacture of its products. When properly selected, this Flowserve product is designed to perform its intended function safely during its useful life. However, the purchaser or user of Flowserve products should be aware that Flowserve products might be used in numerous applications under a wide variety of industrial service conditions. Although Flowserve can provide general guidelines, it cannot provide specific data and warnings for all possible applications. The purchaser/user must therefore assume the ultimate responsibility for the proper sizing and selection, installation, operation, and maintenance of Flowserve products. The purchaser/user should read and understand the Installation Instructions included with the product, and train its employees and contractors in the safe use of Flowserve products in connection with the specific application.

While the information and specifications contained in this literature are believed to be accurate, they are supplied for informative purposes only and should not be considered certified or as a guarantee of satisfactory results by reliance thereon. Nothing contained herein is to be construed as a warranty or guarantee, express or implied, regarding any matter with respect to this product. Because Flowserve is continually improving and upgrading its product design, the specifications, dimensions and information contained herein are subject to change without notice. Should any question arise concerning these provisions, the purchaser/user should contact Flowserve Corporation at any one of its worldwide operations or offices.

© Flowserve Corporation (2013)

USA and Canada

Kalamazoo, Michigan USA
Telephone: 1 269 381 2650
Telefax: 1 269 382 8726

Europe, Middle East, Africa

Etten-Leur, the Netherlands
Telephone: 31 765 028 200
Telefax: 31 765 028 487

Asia Pacific

Singapore
Telephone: 65 6544 6800
Telefax: 65 6214 0541

Latin America

Mexico City
Telephone: 52 55 5567 7170
Telefax: 52 55 5567 4224